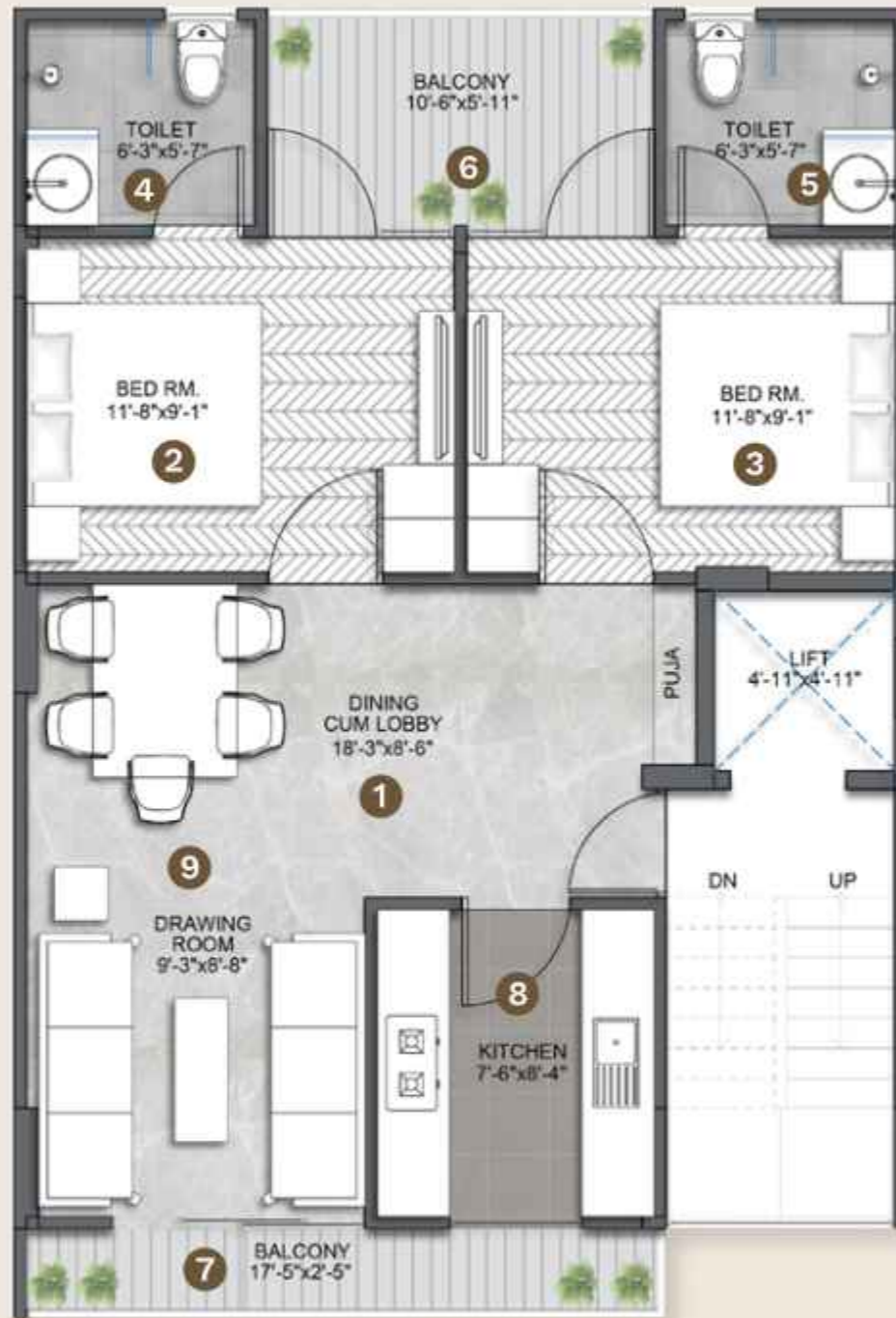


2 BHK TYPICAL FLOOR PLAN



- ① Dining cum Lobby
18'-3" x 8'-6"
- ② BR1
11'-8" x 9'-1"
- ③ BR2
11'-8" x 9'-1"
- ④ T1
6'-3" x 5'-7"
- ⑤ T2
6'-3" x 5'-7"
- ⑥ Balcony 1
10'-6" x 5'-11"
- ⑦ Balcony 2
17'-5" x 2'-5"
- ⑧ Kitchen
7'-6" x 8'-4"
- ⑨ Drawing Room
9'-3" x 8'-8"